

CREEK BEACH

SURF

FLOOR PLANS



EMAAR

BUILDING 1

EMAAR

DUBAI CREEK HARBOUR

SURF AT CREEK BEACH

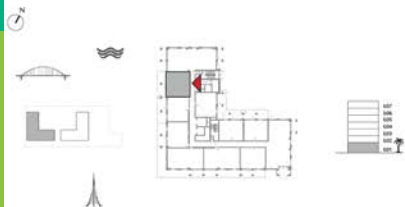
BUILDING 1

LEVEL 1

UNIT 101

1 BEDROOM

APARTMENT AREA	55.71 SQ.M.	599.66 SQ.FT.
BALCONY AREA	27.15 SQ.M.	292.24 SQ.FT.
TOTAL AREA	82.86 SQ.M.	891.90 SQ.FT.



OR PLAN 1. All dimensions are in imperial and metric, and measured from finish to finish excluding construction tolerances. 2. All materials, dimensions, and drawings are approximate only. 3. Information is subject to change without notice, at developer's discretion. 4. Actual area may vary from the stated area. 5. Drawings not to scale. 6. All images used are for illustrative purposes only and do not represent the actual size, features, specifications, fittings, and furnishings. 7. The developer reserves the right to make revisions / alterations, at its absolute discretion, without any liability whatsoever.

EMAA

DUBAI CREEK HARBOUR

SURF AT CREEK BEACH

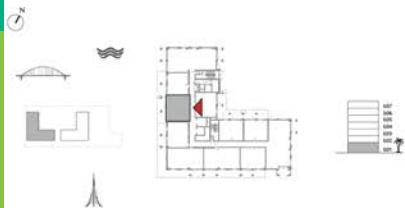
BUILDING 1

LEVEL 1

UNIT 102

1 BEDROOM

APARTMENT AREA	55.99 SQ.M.	602.67 SQ.FT.
BALCONY AREA	26.66 SQ.M.	286.97 SQ.FT.
TOTAL AREA	82.65 SQ.M.	889.64 SQ.FT.



OR PLAN 1. All dimensions are in imperial and metric, and measured from finish to finish excluding construction tolerances. 2. All materials, dimensions, and drawings are approximate only. 3. Information is subject to change without notice, at developer's discretion. 4. Actual area may vary from the stated area. 5. Drawings not to scale. 6. All images used are for illustrative purposes only and do not represent the actual size, features, specifications, fittings, and furnishings. 7. The developer reserves the right to make revisions / alterations, at its absolute discretion, without any liability whatsoever.

EMAA

DUBAI CREEK HARBOUR

SURF AT CREEK BEACH

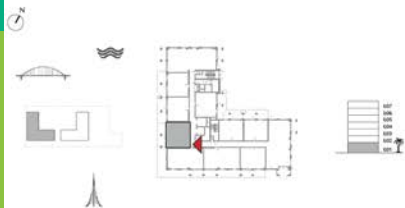
BUILDING 1

LEVEL 1

UNIT 103

1 BEDROOM

APARTMENT AREA	59.78 SQ.M.	643.47 SQ.FT.
BALCONY AREA	25.03 SQ.M.	269.42 SQ.FT.
TOTAL AREA	84.81 SQ.M.	912.89 SQ.FT.



OR PLAN 1. All dimensions are in imperial and metric, and measured from finish to finish excluding construction tolerances. 2. All materials, dimensions, and drawings are approximate only. 3. Information is subject to change without notice, at developer's discretion. 4. Actual area may vary from the stated area. 5. Drawings not to scale. 6. All images used are for illustrative purposes only and do not represent the actual size, features, specifications, fittings, and furnishings. 7. The developer reserves the right to make revisions / alterations, at its absolute discretion, without any liability whatsoever.

EMAA

DUBAI CREEK HARBOUR

SURF AT CREEK BEACH

BUILDING 1

LEVEL 1

UNIT 104

2 BEDROOM

APARTMENT AREA	83.57 SQ.M.	899.54 SQ.FT.
BALCONY AREA	65.21 SQ.M.	701.91 SQ.FT.
TOTAL AREA	148.78 SQ.M.	1601.45 SQ.FT.



OR PLAN 1. All dimensions are in imperial and metric, and measured from finish to finish excluding construction tolerances. 2. All materials, dimensions, and drawings are approximate only. 3. Information is subject to change without notice, at developer's discretion. 4. Actual area may vary from the stated area. 5. Drawings not to scale. 6. All images used are for illustrative purposes only and do not represent the actual size, features, specifications, fittings, and furnishings. 7. The developer reserves the right to make revisions / alterations, at it's absolute discretion, without any liability whatsoever.

EMAA

DUBAI CREEK HARBOUR

SURF AT CREEK BEACH

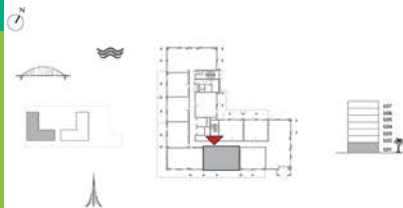
BUILDING 1

LEVEL 1

UNIT 105

2 BEDROOM

APARTMENT AREA	84.83 SQ.M.	913.10 SQ.FT.
BALCONY AREA	33.29 SQ.M.	358.33 SQ.FT.
TOTAL AREA	118.12 SQ.M.	1271.43 SQ.FT.



OR PLAN 1. All dimensions are in imperial and metric, and measured from finish to finish excluding construction tolerances. 2. All materials, dimensions, and drawings are approximate only. 3. Information is subject to change without notice, at developer's discretion. 4. Actual area may vary from the stated area. 5. Drawings not to scale. 6. All images used are for illustrative purposes only and do not represent the actual size, features, specifications, fittings, and furnishings. 7. The developer reserves the right to make revisions / alterations, at its absolute discretion, without any liability whatsoever.

EMAA

DUBAI CREEK HARBOUR

SURF AT CREEK BEACH

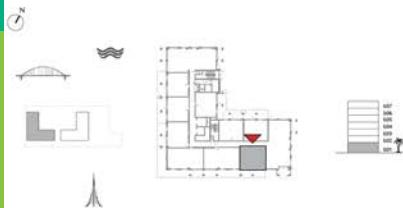
BUILDING 1

LEVEL 1

UNIT 106

1 BEDROOM

APARTMENT AREA	59.53 SQ.M.	640.78 SQ.FT.
BALCONY AREA	21.69 SQ.M.	233.47 SQ.FT.
TOTAL AREA	81.22 SQ.M.	874.25 SQ.FT.



OR PLAN 1. All dimensions are in imperial and metric, and measured from finish to finish excluding construction tolerances. 2. All materials, dimensions, and drawings are approximate only. 3. Information is subject to change without notice, at developer's discretion. 4. Actual area may vary from the stated area. 5. Drawings not to scale. 6. All images used are for illustrative purposes only and do not represent the actual size, features, specifications, fittings, and furnishings. 7. The developer reserves the right to make revisions / alterations, at its absolute discretion, without any liability whatsoever.

EMAA

DUBAI CREEK HARBOUR

SURF AT CREEK BEACH

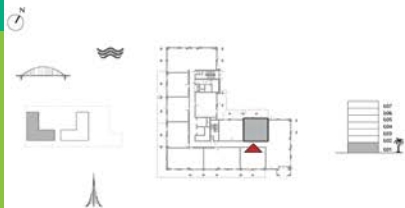
BUILDING 1

LEVEL 1

UNIT 107

1 BEDROOM

APARTMENT AREA	55.57 SQ.M.	598.15 SQ.FT.
BALCONY AREA	26.63 SQ.M.	286.64 SQ.FT.
TOTAL AREA	82.20 SQ.M.	884.79 SQ.FT.



OR PLAN 1. All dimensions are in imperial and metric, and measured from finish to finish excluding construction tolerances. 2. All materials, dimensions, and drawings are approximate only. 3. Information is subject to change without notice, at developer's discretion. 4. Actual area may vary from the stated area. 5. Drawings not to scale. 6. All images used are for illustrative purposes only and do not represent the actual size, features, specifications, fittings, and furnishings. 7. The developer reserves the right to make revisions / alterations, at its absolute discretion, without any liability whatsoever.

EMAA

DUBAI CREEK HARBOUR

SURF AT CREEK BEACH

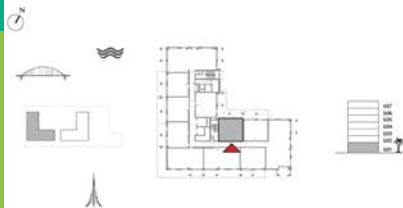
BUILDING 1

LEVEL 1

UNIT 108

1 BEDROOM

APARTMENT AREA	55.57 SQ.M.	598.15 SQ.FT.
BALCONY AREA	20.26 SQ.M.	218.08 SQ.FT.
TOTAL AREA	75.83 SQ.M.	816.23 SQ.FT.



OR PLAN 1. All dimensions are in imperial and metric, and measured from finish to finish excluding construction tolerances. 2. All materials, dimensions, and drawings are approximate only. 3. Information is subject to change without notice, at developer's discretion. 4. Actual area may vary from the stated area. 5. Drawings not to scale. 6. All images used are for illustrative purposes only and do not represent the actual size, features, specifications, fittings, and furnishings. 7. The developer reserves the right to make revisions / alterations, at its absolute discretion, without any liability whatsoever.

EMAA

DUBAI CREEK HARBOUR

SURF AT CREEK BEACH

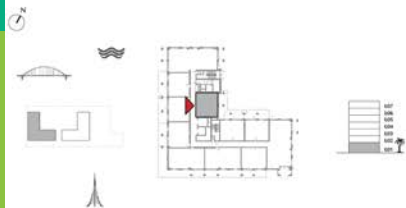
BUILDING 1

LEVEL 1

UNIT 109

1 BEDROOM

APARTMENT AREA	55.30 SQ.M.	595.24 SQ.FT.
BALCONY AREA	25.92 SQ.M.	279.00 SQ.FT.
TOTAL AREA	81.22 SQ.M.	874.24 SQ.FT.



OR PLAN 1. All dimensions are in imperial and metric, and measured from finish to finish excluding construction tolerances. 2. All materials, dimensions, and drawings are approximate only. 3. Information is subject to change without notice, at developer's discretion. 4. Actual area may vary from the stated area. 5. Drawings not to scale. 6. All images used are for illustrative purposes only and do not represent the actual size, features, specifications, fittings, and furnishings. 7. The developer reserves the right to make revisions / alterations, at its absolute discretion, without any liability whatsoever.

EMAA

DUBAI CREEK HARBOUR

SURF AT CREEK BEACH

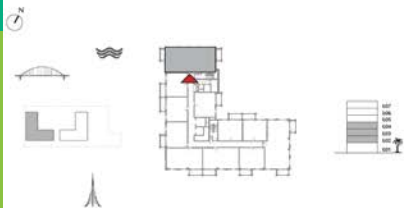
BUILDING 1

LEVEL 2, 3, 4

UNIT 201, 301, 401

3 BEDROOM

APARTMENT AREA	123.82 SQ.M.	1332.79 SQ.FT.
BALCONY AREA	14.79 SQ.M.	159.20 SQ.FT.
TOTAL AREA	138.61 SQ.M.	1491.99 SQ.FT.



OR PLAN 1. All dimensions are in imperial and metric, and measured from finish to finish excluding construction tolerances. 2. All materials, dimensions, and drawings are approximate only. 3. Information is subject to change without notice, at developer's discretion. 4. Actual area may vary from the stated area. 5. Drawings not to scale. 6. All images used are for illustrative purposes only and do not represent the actual size, features, specifications, fittings, and furnishings. 7. The developer reserves the right to make revisions / alterations, at its absolute discretion, without any liability whatsoever.

EMAA

DUBAI CREEK HARBOUR

SURF AT CREEK BEACH

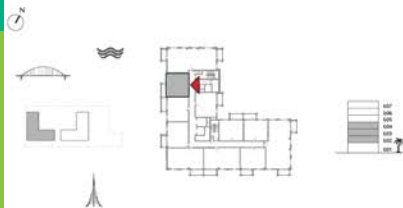
BUILDING 1

LEVEL 2, 3, 4

UNIT 202, 302, 402

1 BEDROOM

APARTMENT AREA	55.32 SQ.M.	595.46 SQ.FT.
BALCONY AREA	8.40 SQ.M.	90.42 SQ.FT.
TOTAL AREA	63.72 SQ.M.	685.88 SQ.FT.



OR PLAN 1. All dimensions are in imperial and metric, and measured from finish to finish excluding construction tolerances. 2. All materials, dimensions, and drawings are approximate only. 3. Information is subject to change without notice, at developer's discretion. 4. Actual area may vary from the stated area. 5. Drawings not to scale. 6. All images used are for illustrative purposes only and do not represent the actual size, features, specifications, fittings, and furnishings. 7. The developer reserves the right to make revisions / alterations, at its absolute discretion, without any liability whatsoever.

EMAA

DUBAI CREEK HARBOUR

SURF AT CREEK BEACH

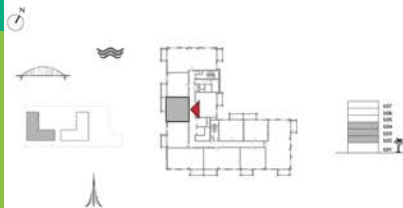
BUILDING 1

LEVEL 2, 3, 4

UNIT 203, 303, 403

1 BEDROOM

APARTMENT AREA	55.48 SQ.M.	597.18 SQ.FT.
BALCONY AREA	8.40 SQ.M.	90.42 SQ.FT.
TOTAL AREA	63.88 SQ.M.	687.60 SQ.FT.



OR PLAN 1. All dimensions are in imperial and metric, and measured from finish to finish excluding construction tolerances. 2. All materials, dimensions, and drawings are approximate only. 3. Information is subject to change without notice, at developer's discretion. 4. Actual area may vary from the stated area. 5. Drawings not to scale. 6. All images used are for illustrative purposes only and do not represent the actual size, features, specifications, fittings, and furnishings. 7. The developer reserves the right to make revisions / alterations, at its absolute discretion, without any liability whatsoever.

EMAA

DUBAI CREEK HARBOUR

SURF AT CREEK BEACH

BUILDING 1

LEVEL 2, 3, 4

UNIT 204, 304, 404

1 BEDROOM

APARTMENT AREA	59.35 SQ.M.	638.84 SQ.FT.
BALCONY AREA	7.40 SQ.M.	79.65 SQ.FT.
TOTAL AREA	66.75 SQ.M.	718.49 SQ.FT.



OR PLAN 1. All dimensions are in imperial and metric, and measured from finish to finish excluding construction tolerances. 2. All materials, dimensions, and drawings are approximate only. 3. Information is subject to change without notice, at developer's discretion. 4. Actual area may vary from the stated area. 5. Drawings not to scale. 6. All images used are for illustrative purposes only and do not represent the actual size, features, specifications, fittings, and furnishings. 7. The developer reserves the right to make revisions / alterations, at its absolute discretion, without any liability whatsoever.

EMAA

DUBAI CREEK HARBOUR

SURF AT CREEK BEACH

BUILDING 1

LEVEL 2, 3, 4

UNIT 205, 305, 405

2 BEDROOM

APARTMENT AREA	83.31 SQ.M.	896.74 SQ.FT.
BALCONY AREA	8.40 SQ.M.	90.42 SQ.FT.
TOTAL AREA	91.71 SQ.M.	987.16 SQ.FT.



OR PLAN 1. All dimensions are in imperial and metric, and measured from finish to finish excluding construction tolerances. 2. All materials, dimensions, and drawings are approximate only. 3. Information is subject to change without notice, at developer's discretion. 4. Actual area may vary from the stated area. 5. Drawings not to scale. 6. All images used are for illustrative purposes only and do not represent the actual size, features, specifications, fittings, and furnishings. 7. The developer reserves the right to make revisions / alterations, at it's absolute discretion, without any liability whatsoever.

EMAA

DUBAI CREEK HARBOUR

SURF AT CREEK BEACH

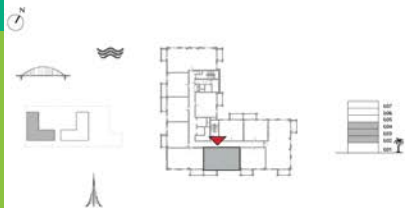
BUILDING 1

LEVEL 2, 3, 4

UNIT 206, 306, 406

2 BEDROOM

APARTMENT AREA	83.71 SQ.M.	901.05 SQ.FT.
BALCONY AREA	8.40 SQ.M.	90.42 SQ.FT.
TOTAL AREA	92.11 SQ.M.	991.47 SQ.FT.



OR PLAN 1. All dimensions are in imperial and metric, and measured from finish to finish excluding construction tolerances. 2. All materials, dimensions, and drawings are approximate only. 3. Information is subject to change without notice, at developer's discretion. 4. Actual area may vary from the stated area. 5. Drawings not to scale. 6. All images used are for illustrative purposes only and do not represent the actual size, features, specifications, fittings, and furnishings. 7. The developer reserves the right to make revisions / alterations, at its absolute discretion, without any liability whatsoever.

EMAA

DUBAI CREEK HARBOUR

SURF AT CREEK BEACH

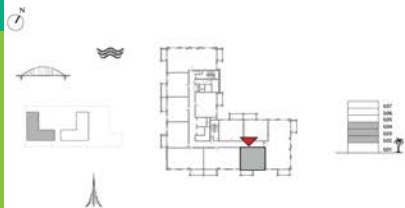
BUILDING 1

LEVEL 2, 3, 4

UNIT 207, 307, 407

1 BEDROOM

APARTMENT AREA	58.72 SQ.M.	632.06 SQ.FT.
BALCONY AREA	7.40 SQ.M.	79.65 SQ.FT.
TOTAL AREA	66.12 SQ.M.	711.71 SQ.FT.



OR PLAN 1. All dimensions are in imperial and metric, and measured from finish to finish excluding construction tolerances. 2. All materials, dimensions, and drawings are approximate only. 3. Information is subject to change without notice, at developer's discretion. 4. Actual area may vary from the stated area. 5. Drawings not to scale. 6. All images used are for illustrative purposes only and do not represent the actual size, features, specifications, fittings, and furnishings. 7. The developer reserves the right to make revisions / alterations, at its absolute discretion, without any liability whatsoever.

EMAA

DUBAI CREEK HARBOUR

SURF AT CREEK BEACH

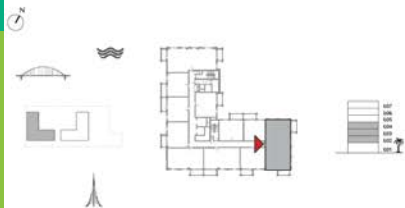
BUILDING 1

LEVEL 2, 3, 4

UNIT 208, 308, 408

3 BEDROOM

APARTMENT AREA	126.98 SQ.M.	1366.80 SQ.FT.
BALCONY AREA	14.79 SQ.M.	159.20 SQ.FT.
TOTAL AREA	141.77 SQ.M.	1526.00 SQ.FT.



OR PLAN 1. All dimensions are in imperial and metric, and measured from finish to finish excluding construction tolerances. 2. All materials, dimensions, and drawings are approximate only. 3. Information is subject to change without notice, at developer's discretion. 4. Actual area may vary from the stated area. 5. Drawings not to scale. 6. All images used are for illustrative purposes only and do not represent the actual size, features, specifications, fittings, and furnishings. 7. The developer reserves the right to make revisions / alterations, at its absolute discretion, without any liability whatsoever.

EMAA

DUBAI CREEK HARBOUR

SURF AT CREEK BEACH

BUILDING 1

LEVEL 2, 3, 4

UNIT 209, 309, 409

1 BEDROOM

APARTMENT AREA	55.56 SQ.M.	598.04 SQ.FT.
BALCONY AREA	8.40 SQ.M.	90.42 SQ.FT.
TOTAL AREA	63.96 SQ.M.	688.46 SQ.FT.



OR PLAN 1. All dimensions are in imperial and metric, and measured from finish to finish excluding construction tolerances. 2. All materials, dimensions, and drawings are approximate only. 3. Information is subject to change without notice, at developer's discretion. 4. Actual area may vary from the stated area. 5. Drawings not to scale. 6. All images used are for illustrative purposes only and do not represent the actual size, features, specifications, fittings, and furnishings. 7. The developer reserves the right to make revisions / alterations, at its absolute discretion, without any liability whatsoever.

EMAA

DUBAI CREEK HARBOUR

SURF AT CREEK BEACH

BUILDING 1

LEVEL 2, 3, 4

UNIT 210, 310, 410

1 BEDROOM

APARTMENT AREA	55.56 SQ.M.	598.04 SQ.FT.
BALCONY AREA	8.40 SQ.M.	90.42 SQ.FT.
TOTAL AREA	63.96 SQ.M.	688.46 SQ.FT.



OR PLAN 1. All dimensions are in imperial and metric, and measured from finish to finish excluding construction tolerances. 2. All materials, dimensions, and drawings are approximate only. 3. Information is subject to change without notice, at developer's discretion. 4. Actual area may vary from the stated area. 5. Drawings not to scale. 6. All images used are for illustrative purposes only and do not represent the actual size, features, specifications, fittings, and furnishings. 7. The developer reserves the right to make revisions / alterations, at its absolute discretion, without any liability whatsoever.

EMAA

DUBAI CREEK HARBOUR

SURF AT CREEK BEACH

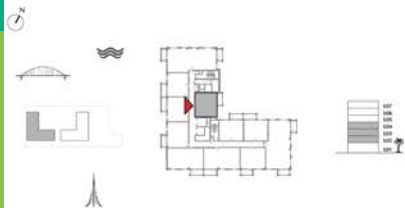
BUILDING 1

LEVEL 2, 3, 4

UNIT 211, 311, 411

1 BEDROOM

APARTMENT AREA	55.46 SQ.M.	596.97 SQ.FT.
BALCONY AREA	7.58 SQ.M.	81.59 SQ.FT.
TOTAL AREA	63.04 SQ.M.	678.56 SQ.FT.



OR PLAN 1. All dimensions are in imperial and metric, and measured from finish to finish excluding construction tolerances. 2. All materials, dimensions, and drawings are approximate only. 3. Information is subject to change without notice, at developer's discretion. 4. Actual area may vary from the stated area. 5. Drawings not to scale. 6. All images used are for illustrative purposes only and do not represent the actual size, features, specifications, fittings, and furnishings. 7. The developer reserves the right to make revisions / alterations, at its absolute discretion, without any liability whatsoever.

EMAA

DUBAI CREEK HARBOUR

SURF AT CREEK BEACH

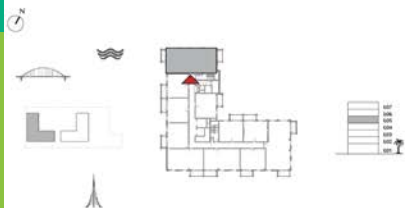
BUILDING 1

LEVEL 5

UNIT 501

3 BEDROOM

APARTMENT AREA	123.82 SQ.M.	1332.79 SQ.FT.
BALCONY AREA	14.79 SQ.M.	159.20 SQ.FT.
TOTAL AREA	138.61 SQ.M.	1491.99 SQ.FT.



OR PLAN 1. All dimensions are in imperial and metric, and measured from finish to finish excluding construction tolerances. 2. All materials, dimensions, and drawings are approximate only. 3. Information is subject to change without notice, at developer's discretion. 4. Actual area may vary from the stated area. 5. Drawings not to scale. 6. All images used are for illustrative purposes only and do not represent the actual size, features, specifications, fittings, and furnishings. 7. The developer reserves the right to make revisions / alterations, at its absolute discretion, without any liability whatsoever.

EMAA

DUBAI CREEK HARBOUR

SURF AT CREEK BEACH

BUILDING 1

LEVEL 5

UNIT 502

1 BEDROOM

APARTMENT AREA	55.32 SQ.M.	595.46 SQ.FT.
BALCONY AREA	8.40 SQ.M.	90.42 SQ.FT.
TOTAL AREA	63.72 SQ.M.	685.88 SQ.FT.



OR PLAN 1. All dimensions are in imperial and metric, and measured from finish to finish excluding construction tolerances. 2. All materials, dimensions, and drawings are approximate only. 3. Information is subject to change without notice, at developer's discretion. 4. Actual area may vary from the stated area. 5. Drawings not to scale. 6. All images used are for illustrative purposes only and do not represent the actual size, features, specifications, fittings, and furnishings. 7. The developer reserves the right to make revisions / alterations, at its absolute discretion, without any liability whatsoever.

EMAA

DUBAI CREEK HARBOUR

SURF AT CREEK BEACH

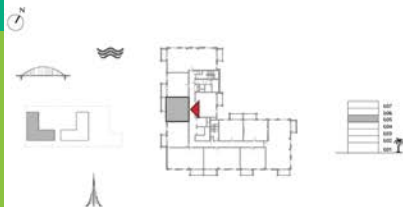
BUILDING 1

LEVEL 5

UNIT 503

1 BEDROOM

APARTMENT AREA	55.48 SQ.M.	597.18 SQ.FT.
BALCONY AREA	8.40 SQ.M.	90.42 SQ.FT.
TOTAL AREA	63.88 SQ.M.	687.60 SQ.FT.



OR PLAN 1. All dimensions are in imperial and metric, and measured from finish to finish excluding construction tolerances. 2. All materials, dimensions, and drawings are approximate only. 3. Information is subject to change without notice, at developer's discretion. 4. Actual area may vary from the stated area. 5. Drawings not to scale. 6. All images used are for illustrative purposes only and do not represent the actual size, features, specifications, fittings, and furnishings. 7. The developer reserves the right to make revisions / alterations, at its absolute discretion, without any liability whatsoever.

EMAA

DUBAI CREEK HARBOUR

SURF AT CREEK BEACH

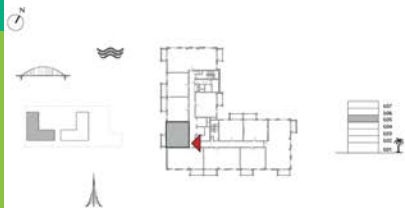
BUILDING 1

LEVEL 5

UNIT 504

1 BEDROOM

APARTMENT AREA	59.35 SQ.M.	638.84 SQ.FT.
BALCONY AREA	7.40 SQ.M.	79.65 SQ.FT.
TOTAL AREA	66.75 SQ.M.	718.49 SQ.FT.



OR PLAN 1. All dimensions are in imperial and metric, and measured from finish to finish excluding construction tolerances. 2. All materials, dimensions, and drawings are approximate only. 3. Information is subject to change without notice, at developer's discretion. 4. Actual area may vary from the stated area. 5. Drawings not to scale. 6. All images used are for illustrative purposes only and do not represent the actual size, features, specifications, fittings, and furnishings. 7. The developer reserves the right to make revisions / alterations, at its absolute discretion, without any liability whatsoever.

EMAA

DUBAI CREEK HARBOUR

SURF AT CREEK BEACH

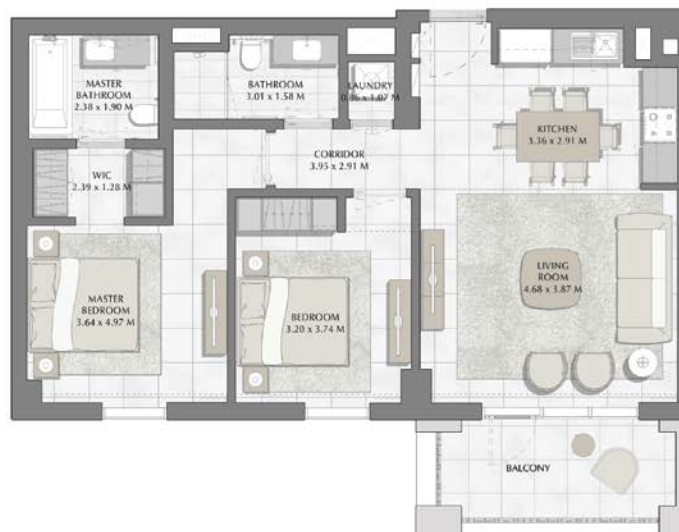
BUILDING 1

LEVEL 5

UNIT 505

2 BEDROOM

APARTMENT AREA	83.31 SQ.M.	896.74 SQ.FT.
BALCONY AREA	8.40 SQ.M.	90.42 SQ.FT.
TOTAL AREA	91.71 SQ.M.	987.16 SQ.FT.



OR PLAN 1. All dimensions are in imperial and metric, and measured from finish to finish excluding construction tolerances. 2. All materials, dimensions, and drawings are approximate only. 3. Information is subject to change without notice, at developer's discretion. 4. Actual area may vary from the stated area. 5. Drawings not to scale. 6. All images used are for illustrative purposes only and do not represent the actual size, features, specifications, fittings, and furnishings. 7. The developer reserves the right to make revisions / alterations, at its absolute discretion, without any liability whatsoever.

EMAA

DUBAI CREEK HARBOUR

SURF AT CREEK BEACH

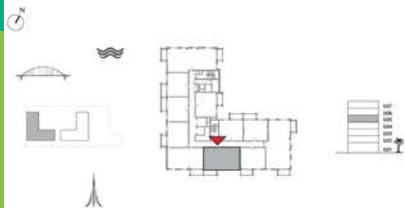
BUILDING 1

LEVEL 5

UNIT 506

2 BEDROOM

APARTMENT AREA	83.71 SQ.M.	901.05 SQ.FT.
BALCONY AREA	8.40 SQ.M.	90.42 SQ.FT.
TOTAL AREA	92.11 SQ.M.	991.47 SQ.FT.



OR PLAN 1. All dimensions are in imperial and metric, and measured from finish to finish excluding construction tolerances. 2. All materials, dimensions, and drawings are approximate only. 3. Information is subject to change without notice, at developer's discretion. 4. Actual area may vary from the stated area. 5. Drawings not to scale. 6. All images used are for illustrative purposes only and do not represent the actual size, features, specifications, fittings, and furnishings. 7. The developer reserves the right to make revisions / alterations, at its absolute discretion, without any liability whatsoever.

EMAA

DUBAI CREEK HARBOUR

SURF AT CREEK BEACH

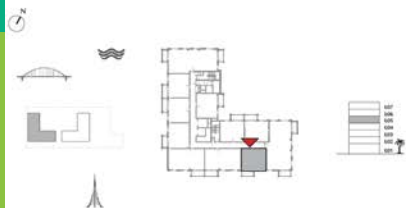
BUILDING 1

LEVEL 5

UNIT 507

1 BEDROOM

APARTMENT AREA	58.72 SQ.M.	632.06 SQ.FT.
BALCONY AREA	7.40 SQ.M.	79.65 SQ.FT.
TOTAL AREA	66.12 SQ.M.	711.71 SQ.FT.



OR PLAN 1. All dimensions are in imperial and metric, and measured from finish to finish excluding construction tolerances. 2. All materials, dimensions, and drawings are approximate only. 3. Information is subject to change without notice, at developer's discretion. 4. Actual area may vary from the stated area. 5. Drawings not to scale. 6. All images used are for illustrative purposes only and do not represent the actual size, features, specifications, fittings, and furnishings. 7. The developer reserves the right to make revisions / alterations, at its absolute discretion, without any liability whatsoever.

EMAA

DUBAI CREEK HARBOUR

SURF AT CREEK BEACH

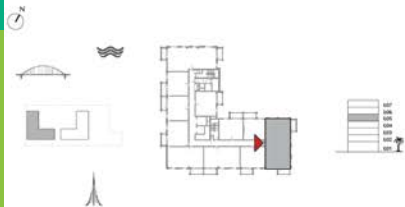
BUILDING 1

LEVEL 5

UNIT 508

3 BEDROOM

APARTMENT AREA	126.98 SQ.M.	1366.80 SQ.FT.
BALCONY AREA	14.79 SQ.M.	159.20 SQ.FT.
TOTAL AREA	141.77 SQ.M.	1526.00 SQ.FT.



OR PLAN 1. All dimensions are in imperial and metric, and measured from finish to finish excluding construction tolerances. 2. All materials, dimensions, and drawings are approximate only. 3. Information is subject to change without notice, at developer's discretion. 4. Actual area may vary from the stated area. 5. Drawings not to scale. 6. All images used are for illustrative purposes only and do not represent the actual size, features, specifications, fittings, and furnishings. 7. The developer reserves the right to make revisions / alterations, at its absolute discretion, without any liability whatsoever.

EMAA

DUBAI CREEK HARBOUR

SURF AT CREEK BEACH

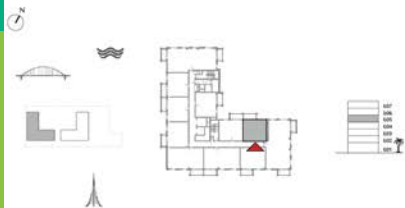
BUILDING 1

LEVEL 5

UNIT 509

1 BEDROOM

APARTMENT AREA	55.56 SQ.M.	598.04 SQ.FT.
BALCONY AREA	8.40 SQ.M.	90.42 SQ.FT.
TOTAL AREA	63.96 SQ.M.	688.46 SQ.FT.



OR PLAN 1. All dimensions are in imperial and metric, and measured from finish to finish excluding construction tolerances. 2. All materials, dimensions, and drawings are approximate only. 3. Information is subject to change without notice, at developer's discretion. 4. Actual area may vary from the stated area. 5. Drawings not to scale. 6. All images used are for illustrative purposes only and do not represent the actual size, features, specifications, fittings, and furnishings. 7. The developer reserves the right to make revisions / alterations, at its absolute discretion, without any liability whatsoever.

EMAA

DUBAI CREEK HARBOUR

SURF AT CREEK BEACH

BUILDING 1

LEVEL 5

UNIT 510

1 BEDROOM

APARTMENT AREA	55.56 SQ.M.	598.04 SQ.FT.
BALCONY AREA	8.40 SQ.M.	90.42 SQ.FT.
TOTAL AREA	63.96 SQ.M.	688.46 SQ.FT.



OR PLAN 1. All dimensions are in imperial and metric, and measured from finish to finish excluding construction tolerances. 2. All materials, dimensions, and drawings are approximate only. 3. Information is subject to change without notice, at developer's discretion. 4. Actual area may vary from the stated area. 5. Drawings not to scale. 6. All images used are for illustrative purposes only and do not represent the actual size, features, specifications, fittings, and furnishings. 7. The developer reserves the right to make revisions / alterations, at its absolute discretion, without any liability whatsoever.

EMAA

DUBAI CREEK HARBOUR

SURF AT CREEK BEACH

BUILDING 1

LEVEL 5

UNIT 511

1 BEDROOM

APARTMENT AREA	55.46 SQ.M.	596.97 SQ.FT.
BALCONY AREA	7.58 SQ.M.	81.59 SQ.FT.
TOTAL AREA	63.04 SQ.M.	678.56 SQ.FT.



OR PLAN 1. All dimensions are in imperial and metric, and measured from finish to finish excluding construction tolerances. 2. All materials, dimensions, and drawings are approximate only. 3. Information is subject to change without notice, at developer's discretion. 4. Actual area may vary from the stated area. 5. Drawings not to scale. 6. All images used are for illustrative purposes only and do not represent the actual size, features, specifications, fittings, and furnishings. 7. The developer reserves the right to make revisions / alterations, at its absolute discretion, without any liability whatsoever.

EMAA

DUBAI CREEK HARBOUR

SURF AT CREEK BEACH

BUILDING 1

LEVEL 6, 7

UNIT 601, 701

3 BEDROOM

APARTMENT AREA	123.82 SQ.M.	1332.79 SQ.FT.
BALCONY AREA	14.79 SQ.M.	159.20 SQ.FT.
TOTAL AREA	138.61 SQ.M.	1491.99 SQ.FT.



OR PLAN 1. All dimensions are in imperial and metric, and measured from finish to finish excluding construction tolerances. 2. All materials, dimensions, and drawings are approximate only. 3. Information is subject to change without notice, at developer's discretion. 4. Actual area may vary from the stated area. 5. Drawings not to scale. 6. All images used are for illustrative purposes only and do not represent the actual size, features, specifications, fittings, and furnishings. 7. The developer reserves the right to make revisions / alterations, at it's absolute discretion, without any liability whatsoever.

EMAA

DUBAI CREEK HARBOUR

SURF AT CREEK BEACH

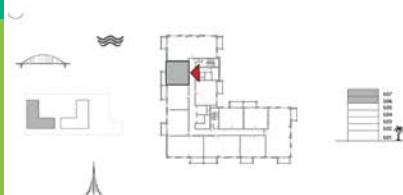
BUILDING 1

LEVEL 6, 7

UNIT 602, 702

1 BEDROOM

APARTMENT AREA	55.32 SQ.M.	595.46 SQ.FT.
BALCONY AREA	8.40 SQ.M.	90.42 SQ.FT.
TOTAL AREA	63.72 SQ.M.	685.88 SQ.FT.



OR PLAN 1. All dimensions are in imperial and metric, and measured from finish to finish excluding construction tolerances. 2. All materials, dimensions, and drawings are approximate only. 3. Information is subject to change without notice, at developer's discretion. 4. Actual area may vary from the stated area. 5. Drawings not to scale. 6. All images used are for illustrative purposes only and do not represent the actual size, features, specifications, fittings, and furnishings. 7. The developer reserves the right to make revisions / alterations, at its absolute discretion, without any liability whatsoever.

EMAA

DUBAI CREEK HARBOUR

SURF AT CREEK BEACH

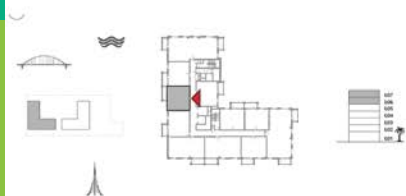
BUILDING 1

LEVEL 6, 7

UNIT 603, 703

1 BEDROOM

APARTMENT AREA	55.48 SQ.M.	597.18 SQ.FT.
BALCONY AREA	8.40 SQ.M.	90.42 SQ.FT.
TOTAL AREA	63.88 SQ.M.	687.60 SQ.FT.



OR PLAN 1. All dimensions are in imperial and metric, and measured from finish to finish excluding construction tolerances. 2. All materials, dimensions, and drawings are approximate only. 3. Information is subject to change without notice, at developer's discretion. 4. Actual area may vary from the stated area. 5. Drawings not to scale. 6. All images used are for illustrative purposes only and do not represent the actual size, features, specifications, fittings, and furnishings. 7. The developer reserves the right to make revisions / alterations, at its absolute discretion, without any liability whatsoever.

EMAA

DUBAI CREEK HARBOUR

SURF AT CREEK BEACH

BUILDING 1

LEVEL 6, 7

UNIT 604, 704

1 BEDROOM

APARTMENT AREA	59.35 SQ.M.	638.84 SQ.FT.
BALCONY AREA	7.40 SQ.M.	79.65 SQ.FT.
TOTAL AREA	66.75 SQ.M.	718.49 SQ.FT.



OR PLAN 1. All dimensions are in imperial and metric, and measured from finish to finish excluding construction tolerances. 2. All materials, dimensions, and drawings are approximate only. 3. Information is subject to change without notice, at developer's discretion. 4. Actual area may vary from the stated area. 5. Drawings not to scale. 6. All images used are for illustrative purposes only and do not represent the actual size, features, specifications, fittings, and furnishings. 7. The developer reserves the right to make revisions / alterations, at its absolute discretion, without any liability whatsoever.

EMAA

DUBAI CREEK HARBOUR

SURF AT CREEK BEACH

BUILDING 1

LEVEL 6, 7

UNIT 605, 705

2 BEDROOM

APARTMENT AREA	83.31 SQ.M.	896.74 SQ.FT.
BALCONY AREA	8.40 SQ.M.	90.42 SQ.FT.
TOTAL AREA	91.71 SQ.M.	987.16 SQ.FT.



OR PLAN 1. All dimensions are in imperial and metric, and measured from finish to finish excluding construction tolerances. 2. All materials, dimensions, and drawings are approximate only. 3. Information is subject to change without notice, at developer's discretion. 4. Actual area may vary from the stated area. 5. Drawings not to scale. 6. All images used are for illustrative purposes only and do not represent the actual size, features, specifications, fittings, and furnishings. 7. The developer reserves the right to make revisions / alterations, at its absolute discretion, without any liability whatsoever.

EMAA

DUBAI CREEK HARBOUR

SURF AT CREEK BEACH

BUILDING 1

LEVEL 6, 7

UNIT 606, 706

2 BEDROOM

APARTMENT AREA	83.71 SQ.M.	901.05 SQ.FT.
BALCONY AREA	8.40 SQ.M.	90.42 SQ.FT.
TOTAL AREA	92.11 SQ.M.	991.47 SQ.FT.



OR PLAN 1. All dimensions are in imperial and metric, and measured from finish to finish excluding construction tolerances. 2. All materials, dimensions, and drawings are approximate only. 3. Information is subject to change without notice, at developer's discretion. 4. Actual area may vary from the stated area. 5. Drawings not to scale. 6. All images used are for illustrative purposes only and do not represent the actual size, features, specifications, fittings, and furnishings. 7. The developer reserves the right to make revisions / alterations, at its absolute discretion, without any liability whatsoever.

EMAA

DUBAI CREEK HARBOUR

SURF AT CREEK BEACH

BUILDING 1

LEVEL 6, 7

UNIT 607, 707

1 BEDROOM

APARTMENT AREA	58.72 SQ.M.	632.06 SQ.FT.
BALCONY AREA	7.40 SQ.M.	79.65 SQ.FT.
TOTAL AREA	66.12 SQ.M.	711.71 SQ.FT.



OR PLAN 1. All dimensions are in imperial and metric, and measured from finish to finish excluding construction tolerances. 2. All materials, dimensions, and drawings are approximate only. 3. Information is subject to change without notice, at developer's discretion. 4. Actual area may vary from the stated area. 5. Drawings not to scale. 6. All images used are for illustrative purposes only and do not represent the actual size, features, specifications, fittings, and furnishings. 7. The developer reserves the right to make revisions / alterations, at its absolute discretion, without any liability whatsoever.

EMAA

DUBAI CREEK HARBOUR

SURF AT CREEK BEACH

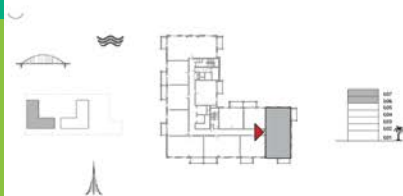
BUILDING 1

LEVEL 6, 7

UNIT 608, 708

3 BEDROOM

APARTMENT AREA	126.98 SQ.M.	1366.80 SQ.FT.
BALCONY AREA	14.79 SQ.M.	159.20 SQ.FT.
TOTAL AREA	141.77 SQ.M.	1526.00 SQ.FT.



OR PLAN 1. All dimensions are in imperial and metric, and measured from finish to finish excluding construction tolerances. 2. All materials, dimensions, and drawings are approximate only. 3. Information is subject to change without notice, at developer's discretion. 4. Actual area may vary from the stated area. 5. Drawings not to scale. 6. All images used are for illustrative purposes only and do not represent the actual size, features, specifications, fittings, and furnishings. 7. The developer reserves the right to make revisions / alterations, at its absolute discretion, without any liability whatsoever.

EMAA

DUBAI CREEK HARBOUR

SURF AT CREEK BEACH

BUILDING 1

LEVEL 6, 7

UNIT 609, 709

1 BEDROOM

APARTMENT AREA	55.56 SQ.M.	598.04 SQ.FT.
BALCONY AREA	8.40 SQ.M.	90.42 SQ.FT.
TOTAL AREA	63.96 SQ.M.	688.46 SQ.FT.



OR PLAN 1. All dimensions are in imperial and metric, and measured from finish to finish excluding construction tolerances. 2. All materials, dimensions, and drawings are approximate only. 3. Information is subject to change without notice, at developer's discretion. 4. Actual area may vary from the stated area. 5. Drawings not to scale. 6. All images used are for illustrative purposes only and do not represent the actual size, features, specifications, fittings, and furnishings. 7. The developer reserves the right to make revisions / alterations, at its absolute discretion, without any liability whatsoever.

EMAA

DUBAI CREEK HARBOUR

SURF AT CREEK BEACH

BUILDING 1

LEVEL 6, 7

UNIT 610, 710

1 BEDROOM

APARTMENT AREA	55.56 SQ.M.	598.04 SQ.FT.
BALCONY AREA	8.40 SQ.M.	90.42 SQ.FT.
TOTAL AREA	63.96 SQ.M.	688.46 SQ.FT.



OR PLAN 1. All dimensions are in imperial and metric, and measured from finish to finish excluding construction tolerances. 2. All materials, dimensions, and drawings are approximate only. 3. Information is subject to change without notice, at developer's discretion. 4. Actual area may vary from the stated area. 5. Drawings not to scale. 6. All images used are for illustrative purposes only and do not represent the actual size, features, specifications, fittings, and furnishings. 7. The developer reserves the right to make revisions / alterations, at its absolute discretion, without any liability whatsoever.

EMAA

DUBAI CREEK HARBOUR

SURF AT CREEK BEACH

BUILDING 1

LEVEL 6, 7

UNIT 611, 711

1 BEDROOM

APARTMENT AREA	55.46 SQ.M.	596.97 SQ.FT.
BALCONY AREA	7.60 SQ.M.	81.81 SQ.FT.
TOTAL AREA	63.06 SQ.M.	678.78 SQ.FT.



OR PLAN 1. All dimensions are in imperial and metric, and measured from finish to finish excluding construction tolerances. 2. All materials, dimensions, and drawings are approximate only. 3. Information is subject to change without notice, at developer's discretion. 4. Actual area may vary from the stated area. 5. Drawings not to scale. 6. All images used are for illustrative purposes only and do not represent the actual size, features, specifications, fittings, and furnishings. 7. The developer reserves the right to make revisions / alterations, at its absolute discretion, without any liability whatsoever.

EMAA

DUBAI CREEK HARBOUR SURF

FOR MORE INFORMATION PLEASE CONTACT



📞 +971 55 476 7630
☎️ +971 4 368 7878
✉️ info@afsrealestate.com
🌐 www.afsrealestate.com



📞 +971 50 674 2020
☎️ +971 4 368 7878
✉️ info@dubricks.com
🌐 www.dubricks.com

EMAAR